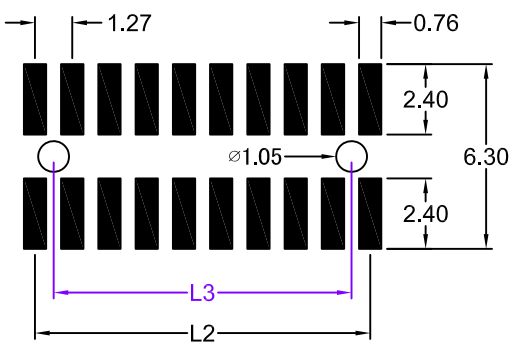
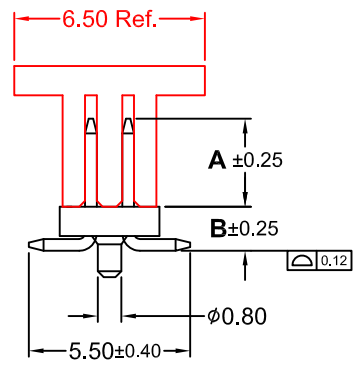
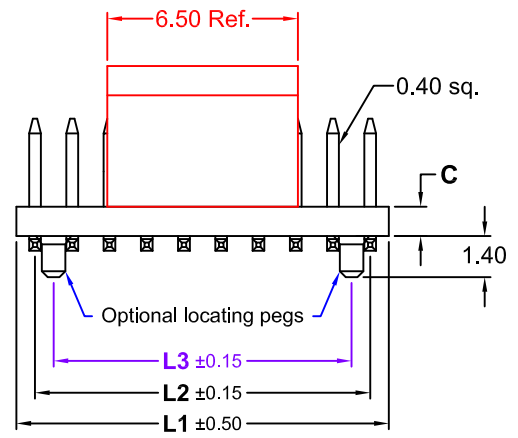
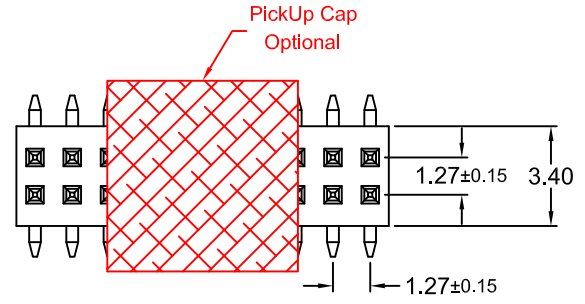
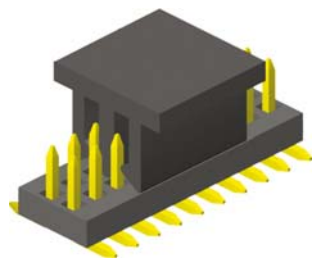


| No. of Pins | Dimension(mm) | | |
|-------------|---------------|-------|-------|
| | L1 | L2 | L3 |
| 006 | 3,81 | 2,54 | |
| 008 | 5,08 | 3,81 | 2,54 |
| 010 | 6,35 | 5,08 | 3,81 |
| 012 | 7,62 | 6,35 | 5,08 |
| 014 | 8,89 | 7,62 | 6,35 |
| 016 | 10,16 | 8,89 | 7,62 |
| 018 | 11,43 | 10,16 | 8,89 |
| 020 | 12,70 | 11,43 | 10,16 |
| 022 | 13,97 | 12,70 | 11,43 |
| 024 | 15,24 | 13,97 | 12,70 |
| 026 | 16,51 | 15,24 | 13,97 |
| 028 | 17,78 | 16,51 | 15,24 |
| 030 | 19,05 | 17,78 | 16,51 |
| 032 | 20,32 | 19,05 | 17,78 |
| 034 | 21,59 | 20,32 | 19,05 |
| 036 | 22,86 | 21,59 | 20,32 |
| 038 | 24,13 | 22,86 | 21,59 |
| 040 | 25,40 | 24,13 | 22,86 |
| 042 | 26,67 | 25,40 | 24,13 |
| 044 | 27,94 | 26,67 | 25,40 |
| 046 | 29,21 | 27,94 | 26,67 |
| 048 | 30,48 | 29,21 | 27,94 |
| 050 | 31,75 | 30,48 | 29,21 |
| 052 | 33,02 | 31,75 | 30,48 |
| 054 | 34,29 | 33,02 | 31,75 |
| 056 | 35,56 | 34,29 | 33,02 |
| 058 | 36,83 | 35,56 | 34,29 |
| 060 | 38,10 | 36,83 | 35,56 |
| 062 | 39,37 | 38,10 | 36,83 |
| 064 | 40,64 | 39,37 | 38,10 |
| 066 | 41,91 | 40,64 | 39,37 |
| 068 | 43,18 | 41,91 | 40,64 |
| 070 | 44,45 | 43,18 | 41,91 |
| 072 | 45,72 | 44,45 | 43,18 |
| 074 | 46,99 | 45,72 | 44,45 |
| 076 | 48,26 | 46,99 | 45,72 |
| 078 | 49,53 | 48,26 | 46,99 |
| 080 | 50,80 | 49,53 | 48,26 |
| 082 | 52,07 | 50,80 | 49,53 |
| 084 | 53,34 | 52,07 | 50,80 |
| 086 | 54,61 | 53,34 | 52,07 |
| 088 | 55,88 | 54,61 | 53,34 |
| 090 | 57,15 | 55,88 | 54,61 |
| 092 | 58,42 | 57,15 | 55,88 |
| 094 | 59,69 | 58,42 | 57,15 |
| 096 | 60,96 | 59,69 | 58,42 |
| 098 | 62,23 | 60,96 | 59,69 |
| 100 | 63,50 | 62,23 | 60,96 |

| REV. | DESCRIPTION | DATE | DRAWN |
|------|---------------------|------------|--------|
| A | New | 08.11.2007 | Lyndon |
| T | add Pin Code "80/3" | 27.01.2018 | Ryan |



Recommended PCB Layout
(Tolerance ±0.05)



Order Code
SS2-xxx-H xx/x - xx/11X

No. of Pin
without locating pegs =
006 to 100
with locating pegs =
008 to 100

Material
PA6T = H
PA9T = HN

Options
without "locating pegs"
A = tube; with PickUp Cap
B = reel; with PickUp Cap
with "locating pegs"
C = tube; without PickUp Cap
D = tube; with PickUp Cap
E = reel; with PickUp Cap

Plating
55 = Gold Flash (Standard)
66 = 10µ" Gold
77 = 15µ" Gold
88 = 30µ" Gold
99 = Tin
Duplex plating
95 = Tin/Gold flash
96 = Tin/10µ" Gold
97 = Tin/15µ" Gold
98 = Tin/30µ" Gold

Pin Code
See Table
on sheet 2/2

Specifications

Electrical
Current rating: 1A
Insulation resistance: 1000MΩ min.
Contact resistance: 20mΩ max.
Withstanding voltage: 500V AC / Minute

Material
Contact: Brass
Plating: Gold, Tin or Duplex
*Duplex = Tin on solder area,
Gold plated on contact area
Insulator: PA6T or PA9T (black) UL 94V-0

Operating temperature: -40°C to +105°C
Processing temperature: +250°C +0/-5°C
for 10 seconds



E-tec 2018 © - all rights reserved www.e-tec.asia



| UNIT | GENERAL TOLERANCE | | DRAWN | DATE | DWG. NO. | SHEET 1/2 |
|------------|-------------------|------------|--------------|-----------------|----------------------|-----------|
| mm | X.° ± | X. ± | Lyndon | 08.11.2007 | SS2-Hxx/x/11X | REV. T |
| SCALE Free | .X° ± | .X ± | Hogi | 27.01.2018 | SERIES NO. | |
| | .XX° ± | .XX ± 0.25 | APPROVE Hogi | DATE 27.01.2018 | SS2-xxx-Hxx/x-xx/11X | |
| | .XXX° ± | .XXX ± | | | | |

1.27mm Pitch Pin Header
-SMT- Dual Row

| Pin Code | Dim"A" (mm) | Dim"B" (mm) | Dim"C" (mm) | Pin Code | Dim"A" (mm) | Dim"B" (mm) | Dim"C" (mm) | Pin Code | Dim"A" (mm) | Dim"B" (mm) | Dim"C" (mm) |
|----------|-------------|-------------|-------------|----------|-------------|-------------|-------------|----------|-------------|-------------|-------------|
| 70/0 | 3.00 | 1.50 | 1.00 | 80/0 | 3.80 | 2.00 | 1.50 | 95/0 | 3.00 | 3.00 | 2.50 |
| 70/1 | 10.00 | 1.50 | 1.00 | 80/1 | 4.30 | 2.10 | 1.50 | | | | |
| 70/2 | 6.50 | 1.50 | 1.00 | 80/2 | 4.30 | 2.40 | 1.50 | | | | |
| 70/3 | 12.50 | 1.50 | 1.00 | 80/3 | 3.00 | 2.00 | 1.50 | | | | |
| 70/4 | 4.00 | 1.50 | 1.00 | | | | | | | | |
| 70/5 | 3.80 | 1.50 | 1.00 | | | | | | | | |
| 70/6 | 1.65 | 1.50 | 1.00 | | | | | | | | |
| 70/7 | 4.80 | 1.50 | 1.00 | | | | | | | | |
| 70/8 | 4.10 | 1.50 | 1.00 | | | | | | | | |
| 70/9 | 8.00 | 1.50 | 1.00 | | | | | | | | |
| 71/0 | 5.40 | 2.27 | 1.00 | | | | | | | | |
| 71/1 | 10.50 | 1.50 | 1.00 | | | | | | | | |
| 71/2 | 3.70 | 2.80 | 1.00 | | | | | | | | |
| 71/3 | 3.50 | 1.50 | 1.00 | | | | | | | | |
| 71/4 | 1.80 | 2.00 | 1.00 | | | | | | | | |
| 71/5 | 15.00 | 1.70 | 1.00 | | | | | | | | |
| 71/6 | 4.30 | 2.10 | 1.00 | | | | | | | | |
| | | | | | | | | | | | |
| | | | | | | | | | | | |
| | | | | | | | | | | | |
| | | | | | | | | | | | |
| | | | | | | | | | | | |
| | | | | | | | | | | | |
| | | | | | | | | | | | |
| | | | | | | | | | | | |
| | | | | | | | | | | | |
| | | | | | | | | | | | |
| | | | | | | | | | | | |



UNIT mm
SCALE Free

| GENERAL TOLERANCE | |
|-------------------|------------|
| X.° ± | X. ± |
| .X° ± | .X ± |
| .XX° ± | .XX ± 0.25 |
| .XXX° ± | .XXX ± |

DRAWN Lyndon
CHECK Hogi
APPROVE Hogi
DATE 08.11.2007
DATE 27.01.2018
DATE 27.01.2018

DWG. NO. SS2-Hxx/x/11X
SHEET 2/2
SERIES NO. SS2-xxx-Hxx/x-xx/11X
REV. T

Pin Code Sheet
for 1.27mm Pitch Pin Header
-SMT- Dual Row