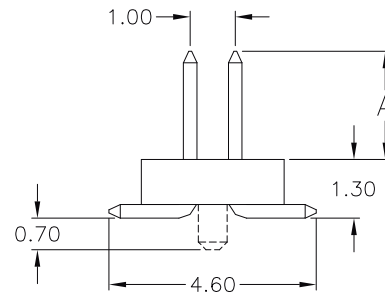
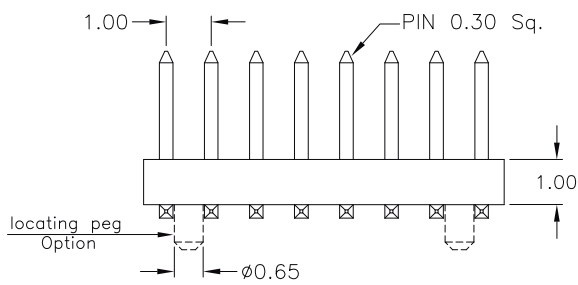
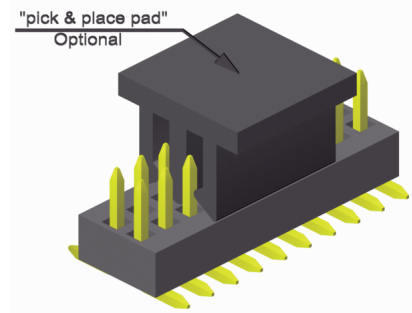
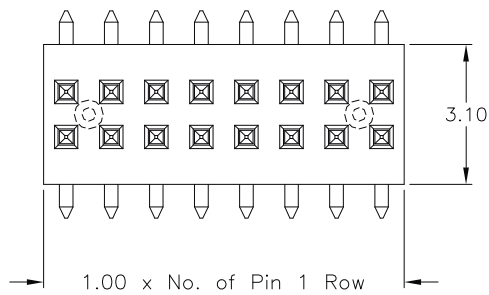


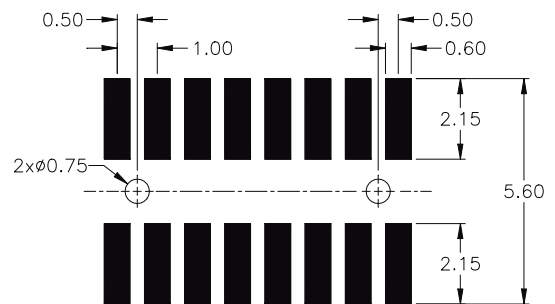
1.00mm pitch Pin Header
 - SMT - low profile dual row



APPLICATION AND FEATURES

- **Standard: tube packing and without "locating pegs"**
- Assures reliable PC Board connections
- Fine pitch, low profile type with 0.30mm square pin
- Mate with female header BS2-xxx-H222-55/00X then "board to board" distance 3.60mm

PCB Surface Mount Layout



SPECIFICATIONS

Current rating	1 A
Insulator resistance	100 MΩ min.
Withstanding voltage	500 V AC

Operating temperature	- 40°C to +105°C
Processing temperature	+250°C +0/-5°C for 10sec.
Contact material	(RoHS compliant) Copper alloy
Insulator material	(RoHS compliant) Nylon UL 94 V-0

How to order

SS2 - xxx - H 18/x - 55/ 00 X

<p>Nbr of pins</p> <p>008 to 100</p>	<table border="1"> <tr> <th>Pin code</th> <th>DIM "A"</th> </tr> <tr> <td>18/0</td> <td>1.90 mm</td> </tr> </table>	Pin code	DIM "A"	18/0	1.90 mm	<p>Plating</p> <p>55 = gold</p> <p>Other platings on request</p>	<p>Packing and "pick & place pad" Option</p> <p>without "locating pegs"</p> <p>A = tube packing; with pick & place pad</p> <p>B = reel packing; with pick & place pad</p> <hr/> <p>with "locating pegs"</p> <p>C = tube packing; without pick & place pad</p> <p>D = tube packing; with pick & place pad</p> <p>E = reel packing; with pick & place pad</p>
Pin code	DIM "A"						
18/0	1.90 mm						